

LiGO-7188

25.03.2005

I	LiGO-7188	3
1	3
2	LiGO-7188	3
3	3
II		4
1	4
2	5
III		6
1	6
2	8
3	11
4	13
5	14
6	19
7	20
8	21
IV	LiGO-7188	23
1	23
2	23
3	23
4	24
5	24
6	24
7	24
8	25
V		25
1	MB-RTU	25
2	I-7000	25
3	-942	25
4	-960	26
5	-961	26
6	DEP-SLDA	27
7	-1	27
8	DK-8070	27
9	-5	28
10	-010	28

11	-011	29
12	-020	29
13	-030	29
14	-3	30
15	-3 .04	30
16	2726	30
17	-4	30
18	200	31
19	230	31
VI	Modbus	31
1	31
VII		32
VIII		32

1

LiGO-7188

1.1

LiGO-7188.

-
-
-

SQL

Windows 98/Me/NT/2000/XP

!

1.2

LiGO-7188

“ / ” (),

LiGO-7188

1.3

- : -25° +75°
- : -40° +85°
- : 0 90%
- WDT (1.6)
-

- CPU: Am188ES (AMD) 40
- : 512
- Flash ROM: 512
- COM- : COM1, COM2, COM3, COM4
- RTC
- 5-

COM1:

- RS-232 RS-485, JP1 (RS-232)
- RS-232: TXD, RXD, RTS, CTS, DTR, DSR, DCD, RI, GND
- RS-485: D1+, D1-,
- : 115200 bps
- FIFO: 16

COM2:

- RS-485: D2+, D2-,
- : 115200 bps
- FIFO: 16
- : 3000

COM3:

- RS-232: TXD3, RXD3, GND
- : 115200 bps

COM4:

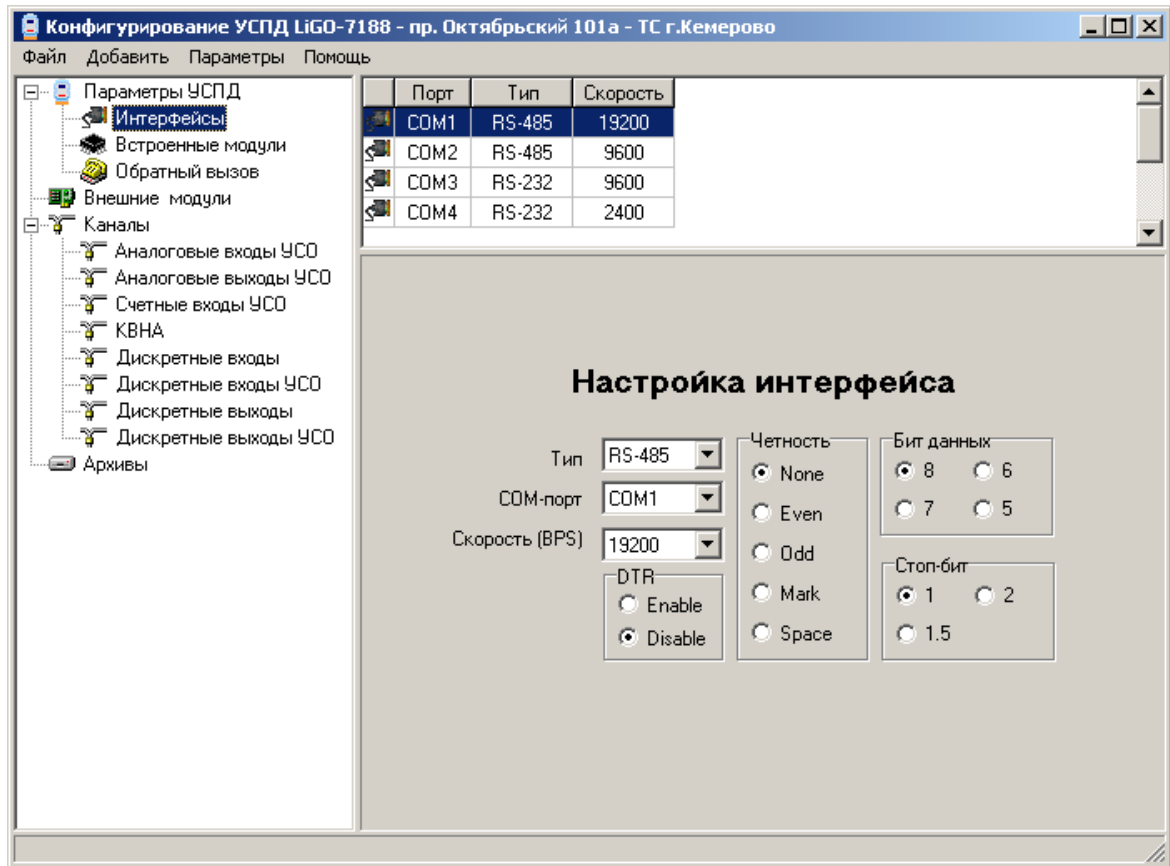
- RS-232: TXD4, RXD4, GND
- : 115200 bps
- (Firmware)

- 7- : 5-

- : 10 30 ()
- : 2 (), 3 ()

2

2.1



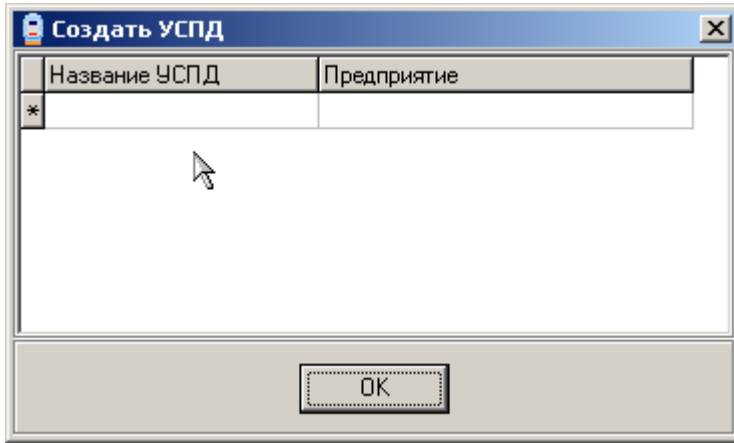
2.2

Config

3

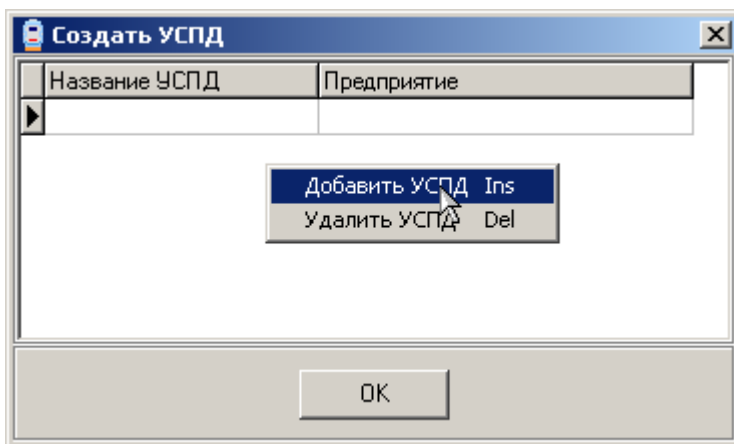
3.1

->

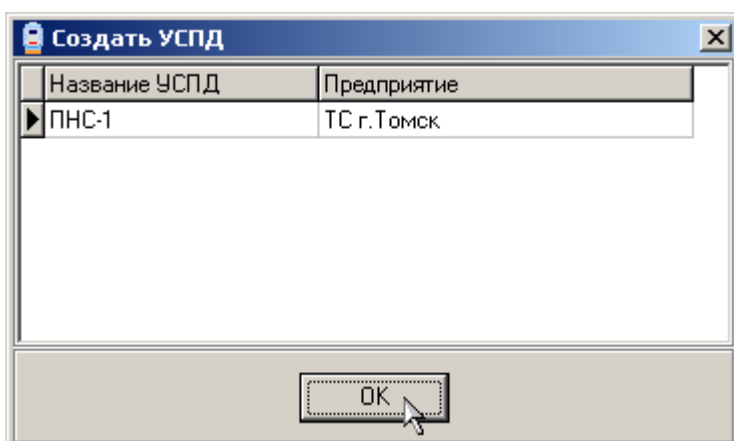


)

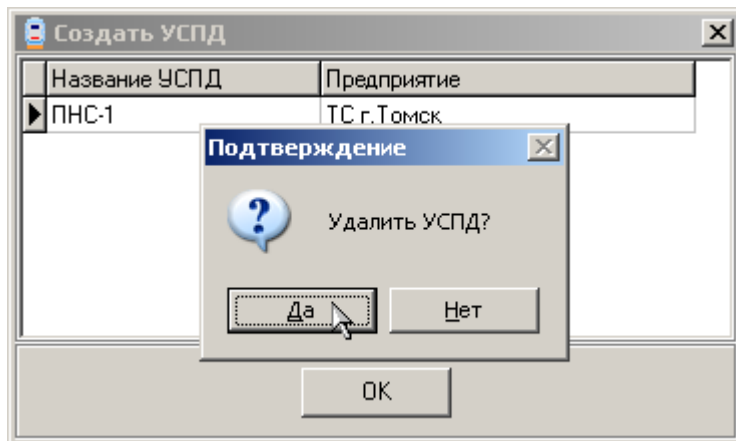
(



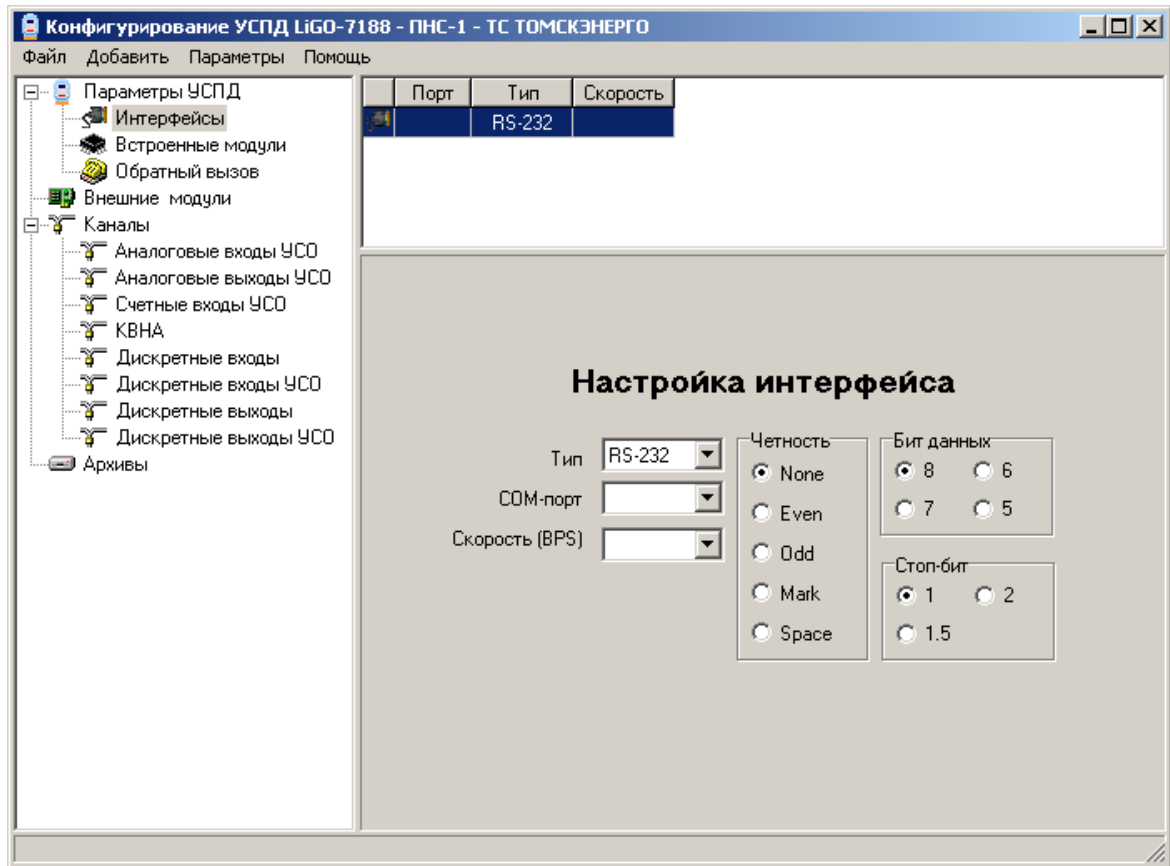
INS.



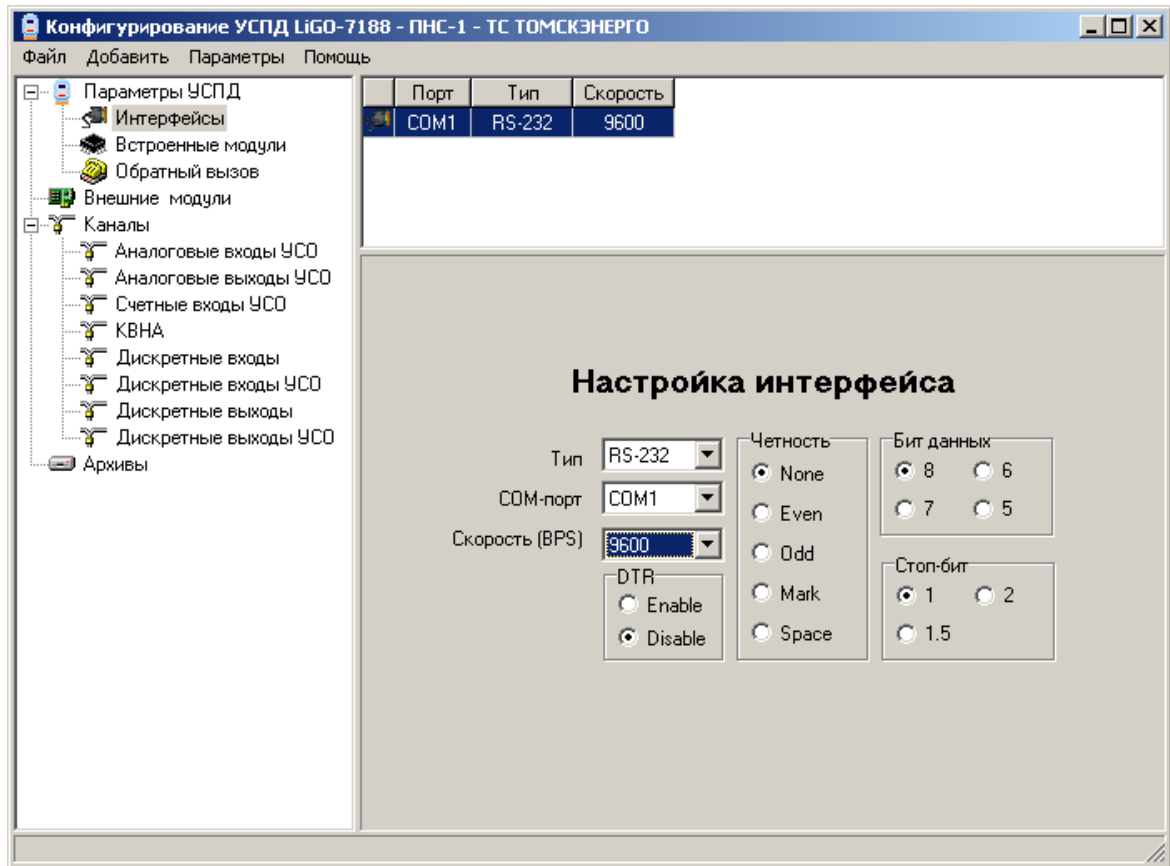
DEL,



- _____
- _____
- _____
- _____
- _____

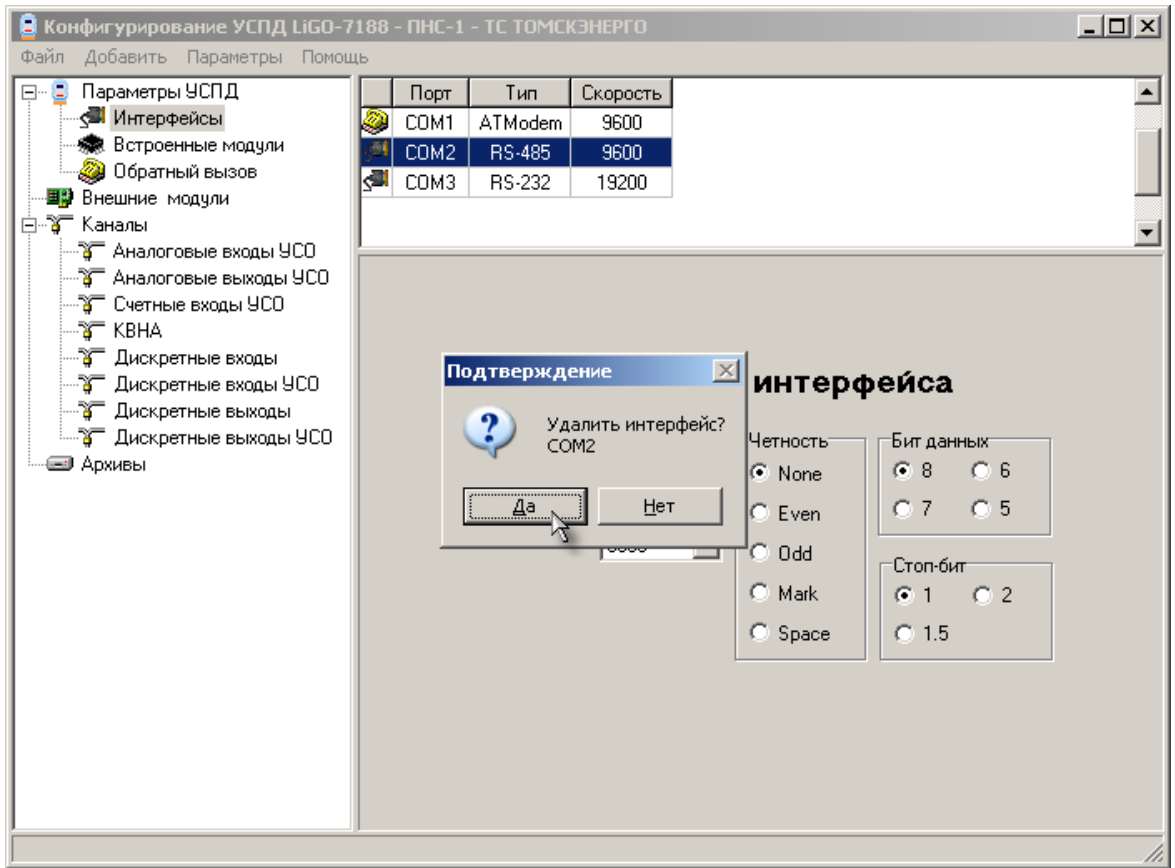


(, , -) . , ,



(COM1 - COM4)

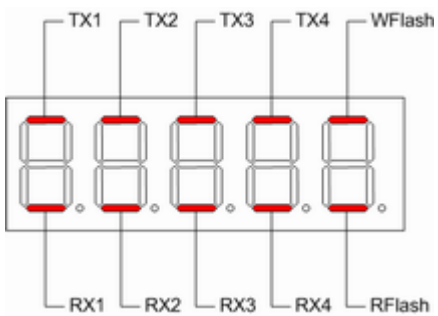
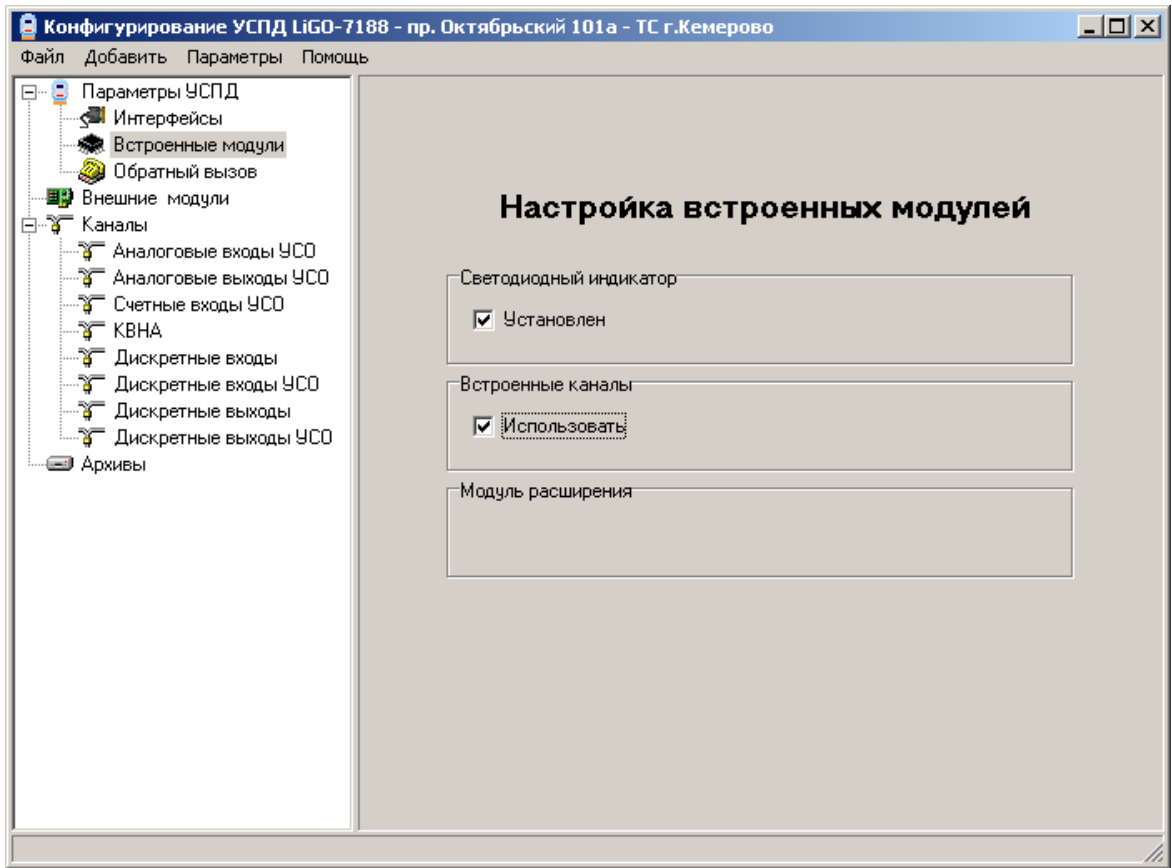
DEL,



- RS-232 – (COM1, COM3, COM4)
- RS-485 – (COM2)
- KM9600/1 –
- ATModem – AT- ()
- T-96SR – DATARADIO
- 48 - 48 MSK

3.3

LiGO-7188 2 2 .
 (5-). LiGO-7188
 7- :
 :



()

:

RX1 - RX4:

COM1 - COM4

TX1 - TX4:

COM1 - COM4

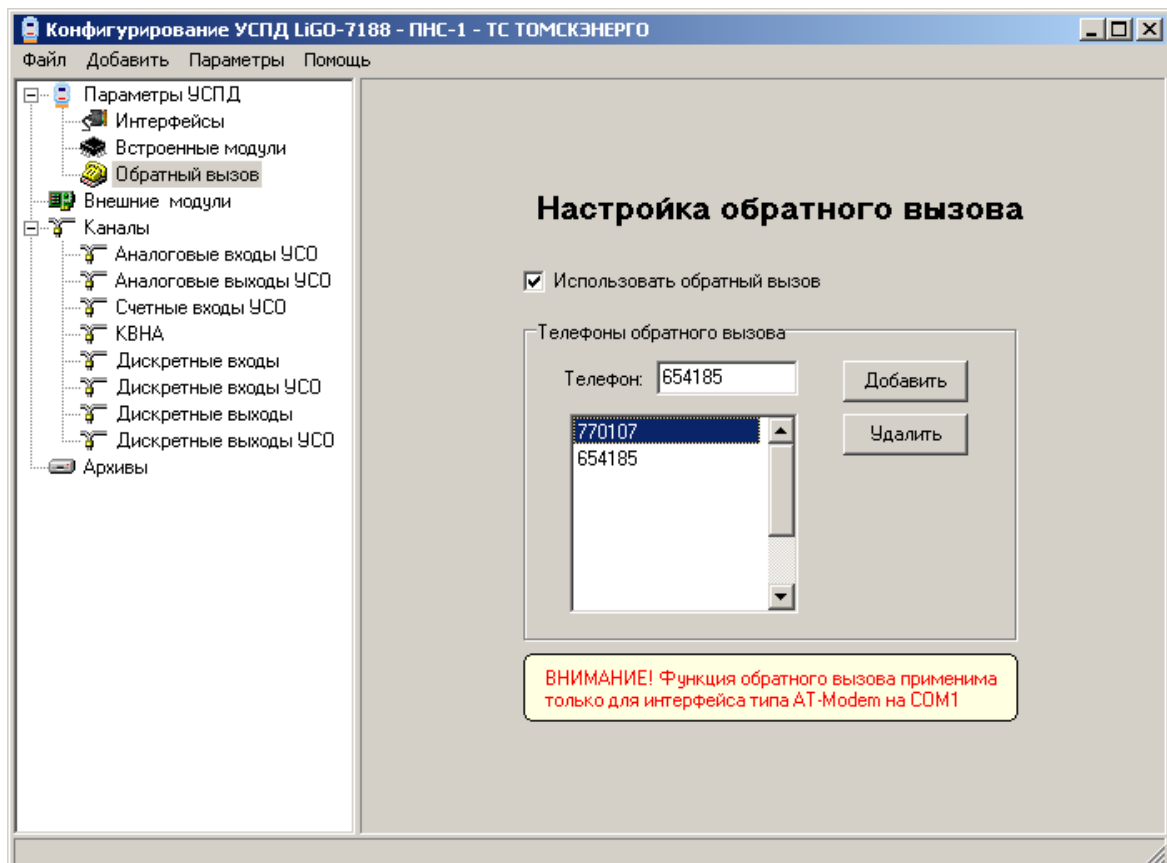
RFlash:

Flash

WFlash:

Flash

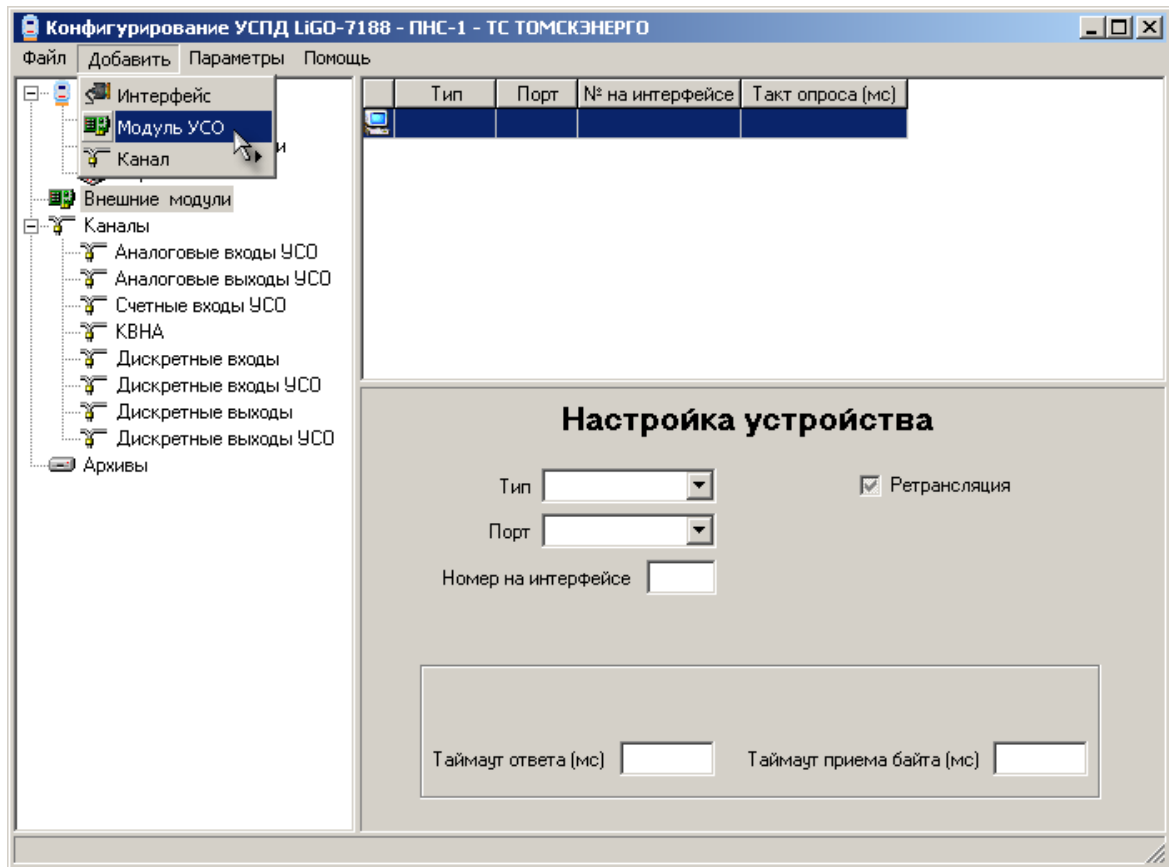
3.4



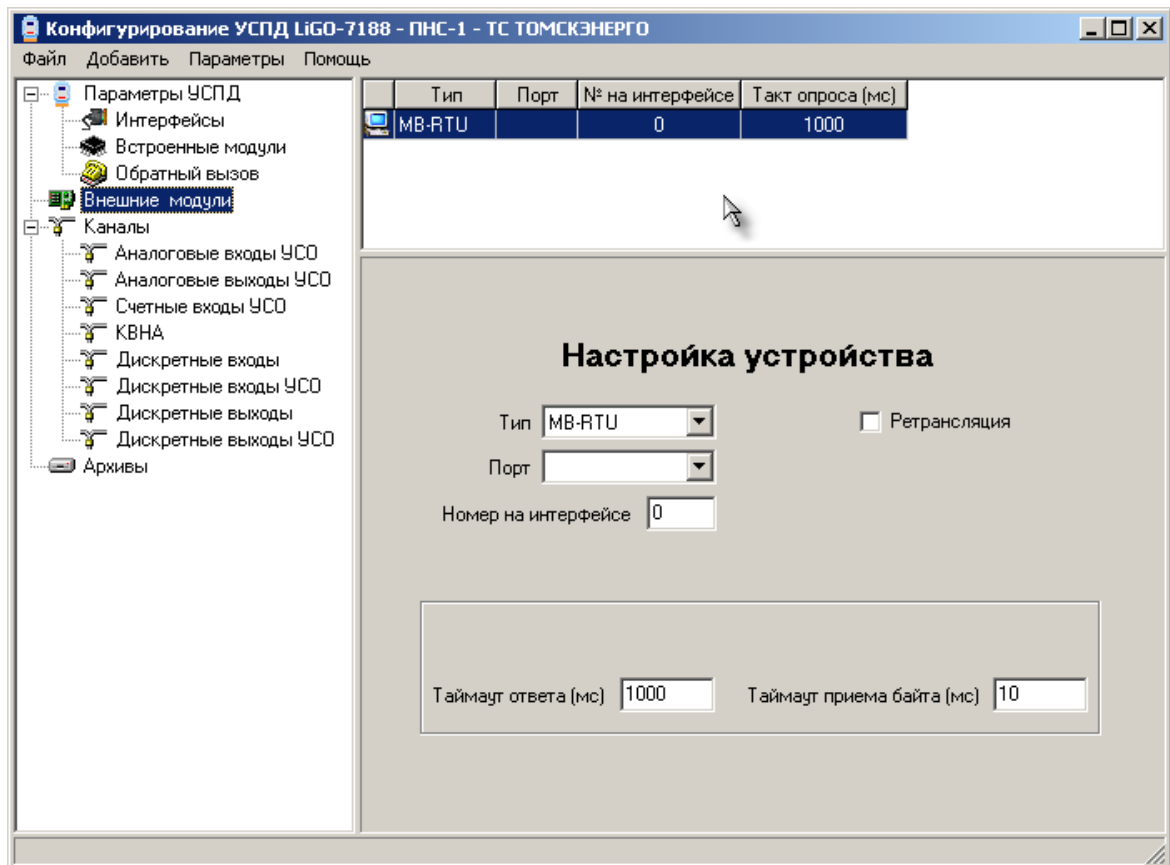
3.5

-> (

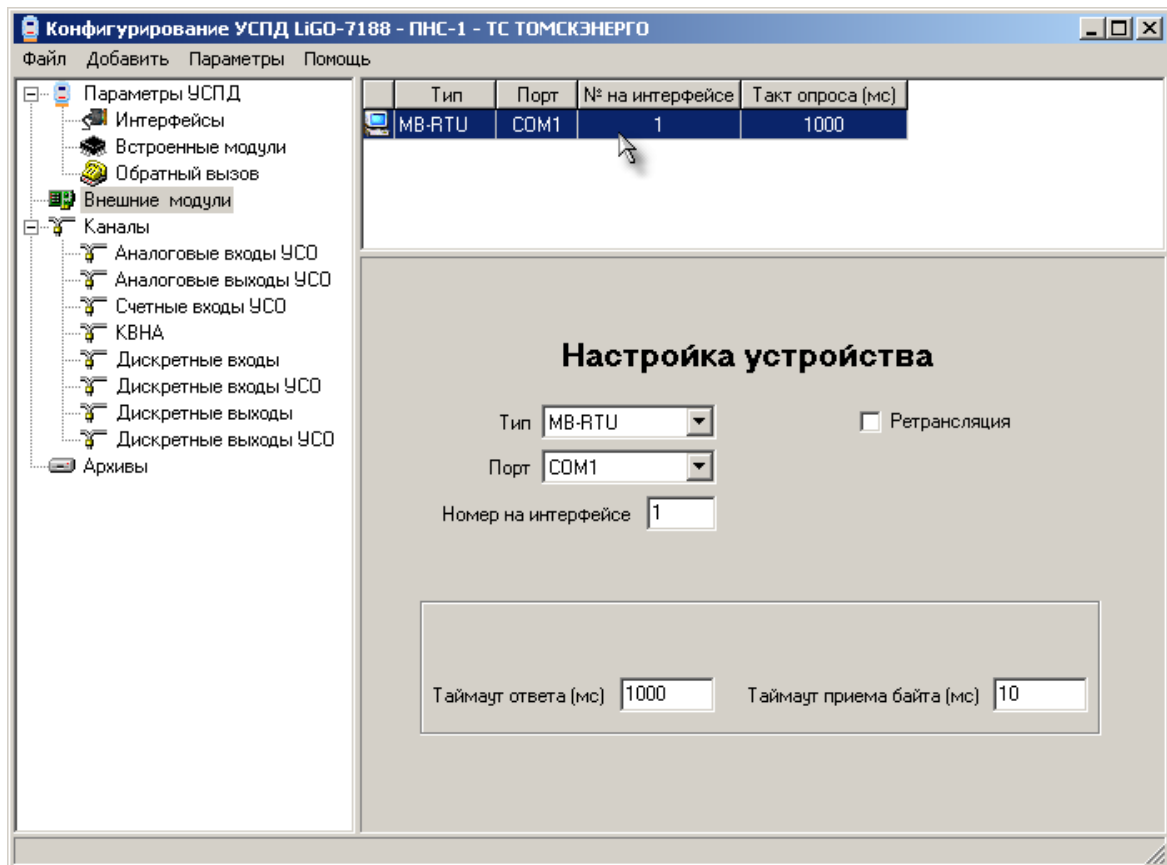
)



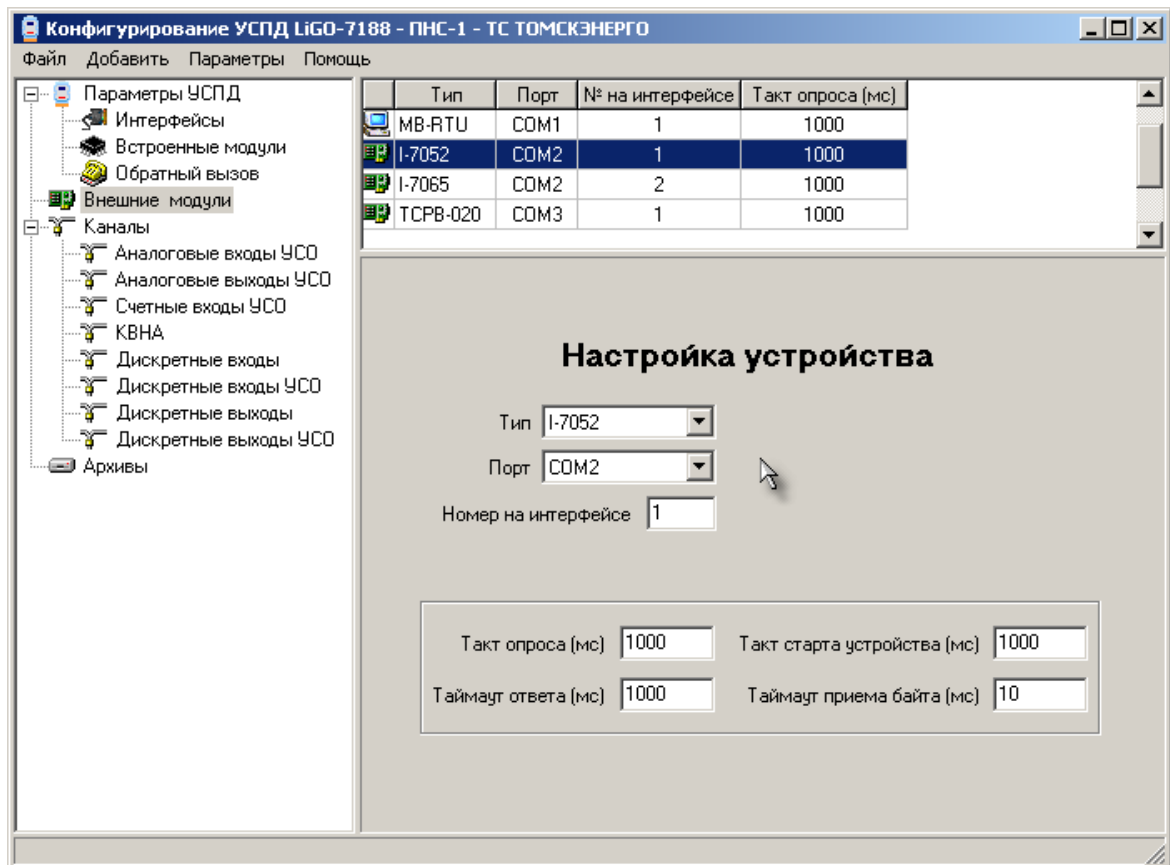
MB-RTU.

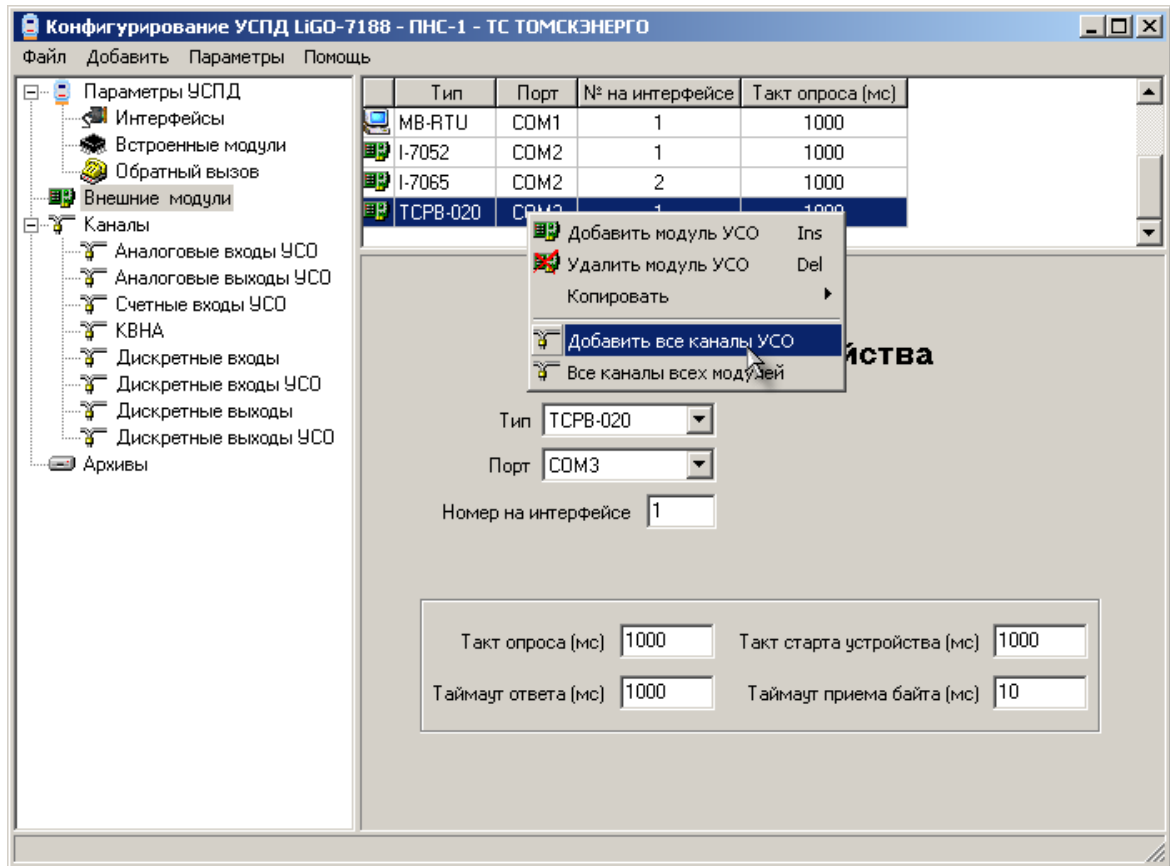


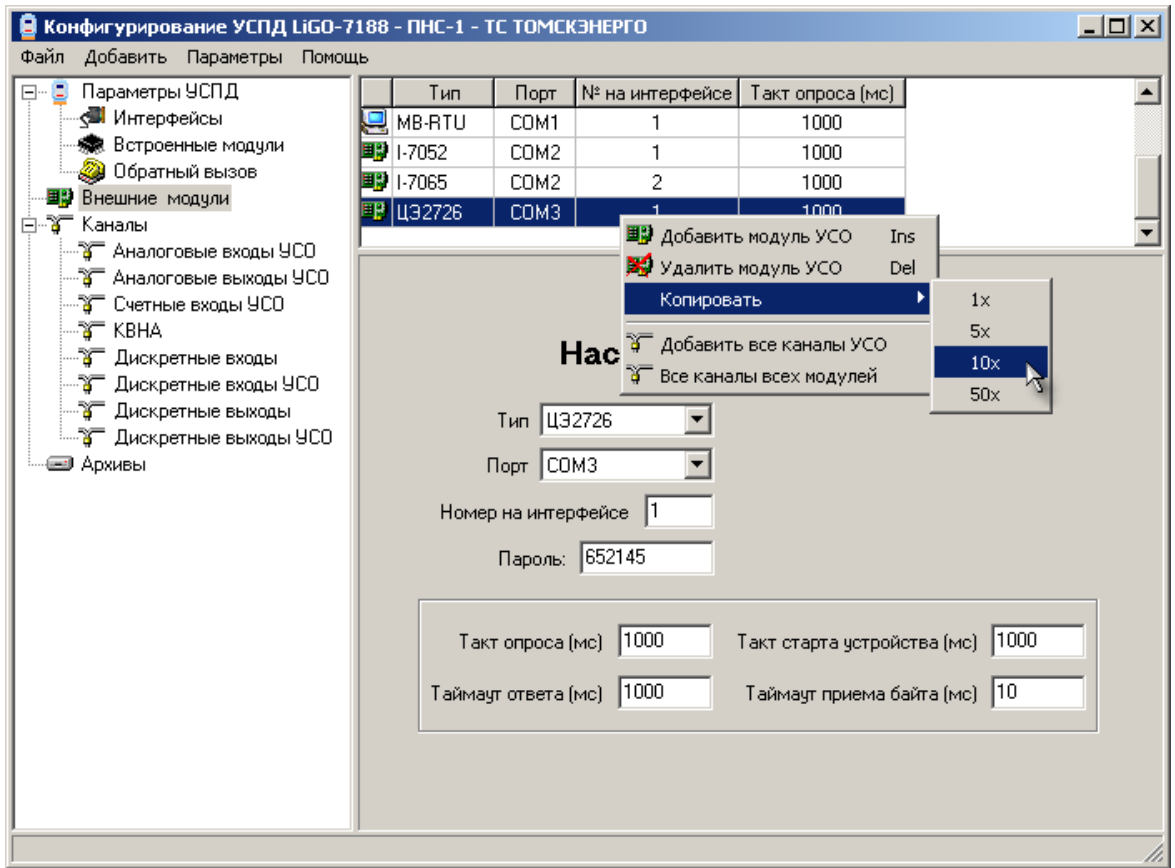
MB-RTU



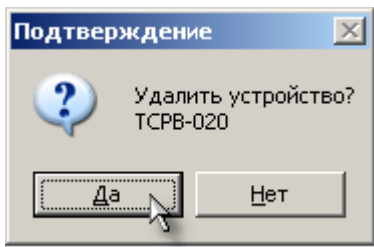
MB-RTU







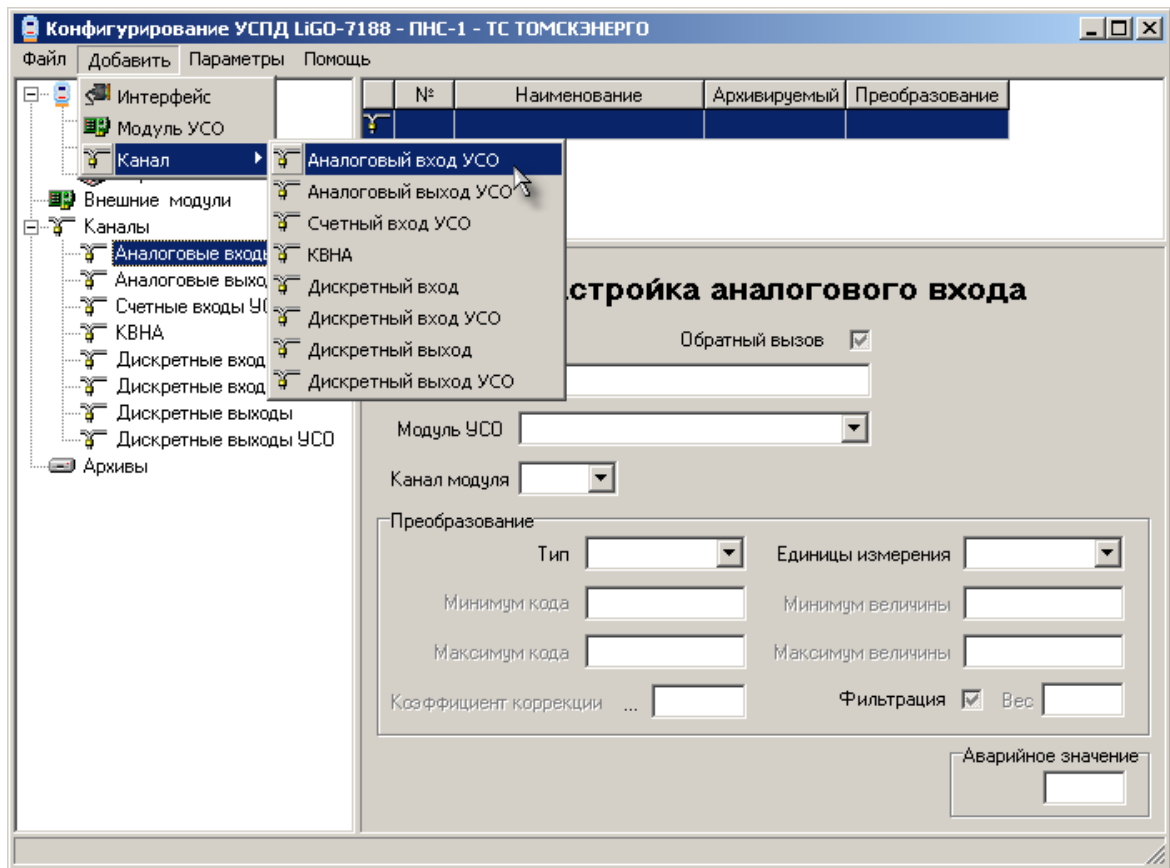
DEL,



!

3.6

->



3.7

LiGO-7188.

Flash

- X600 - 4
- X601 - 8
- X602 - 16
- X603 - 32

- 60 . ()
- 1 . ()

Flash

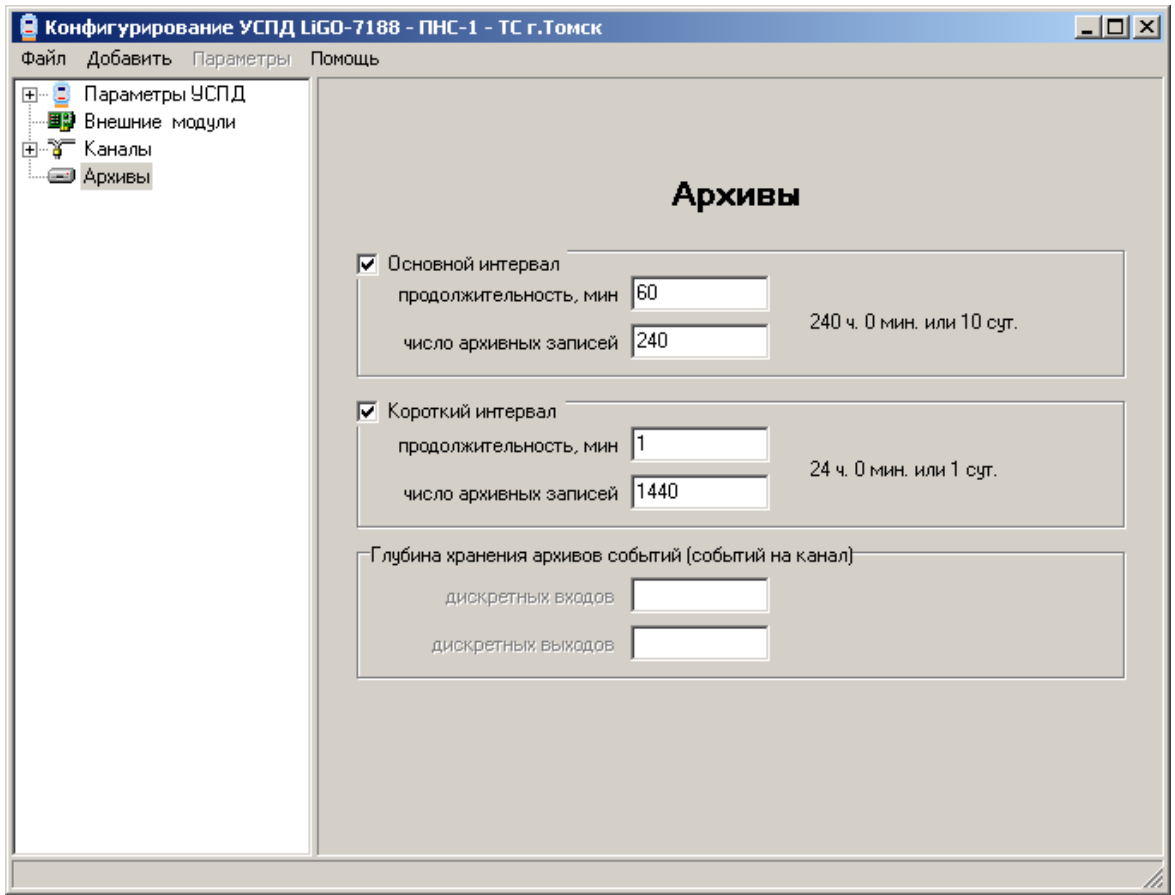
()

512

100.

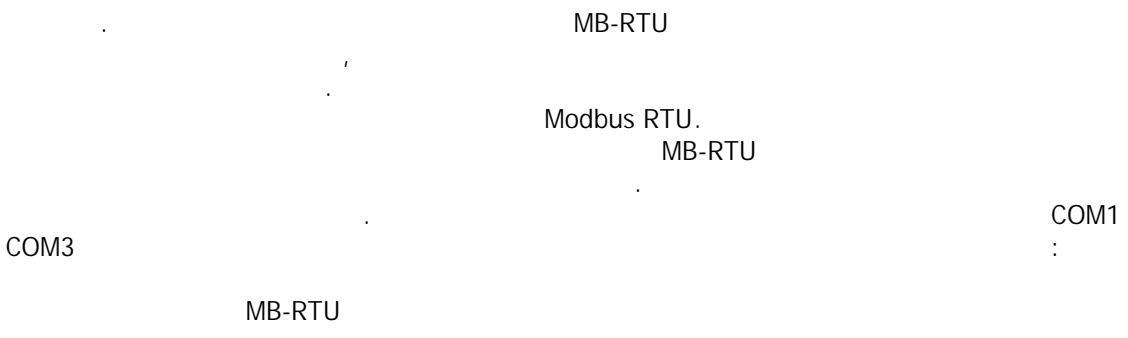
16.

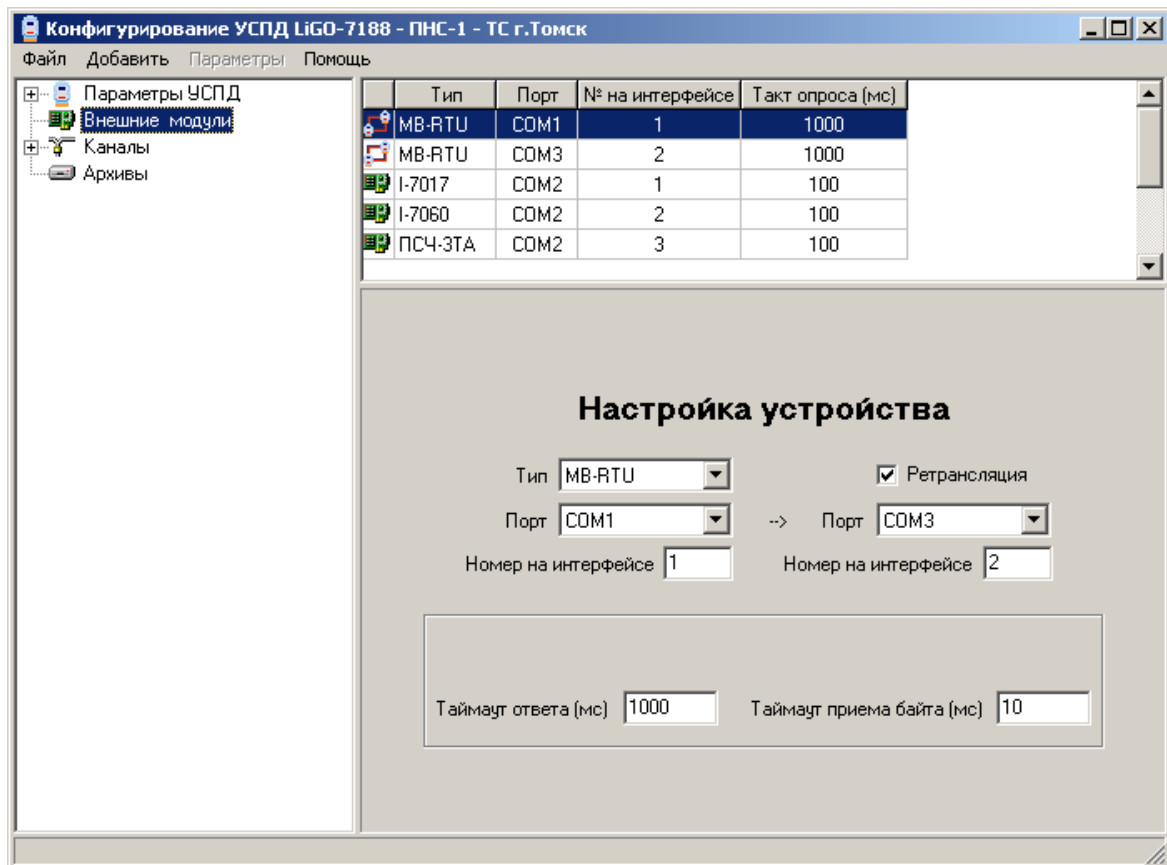
Flash



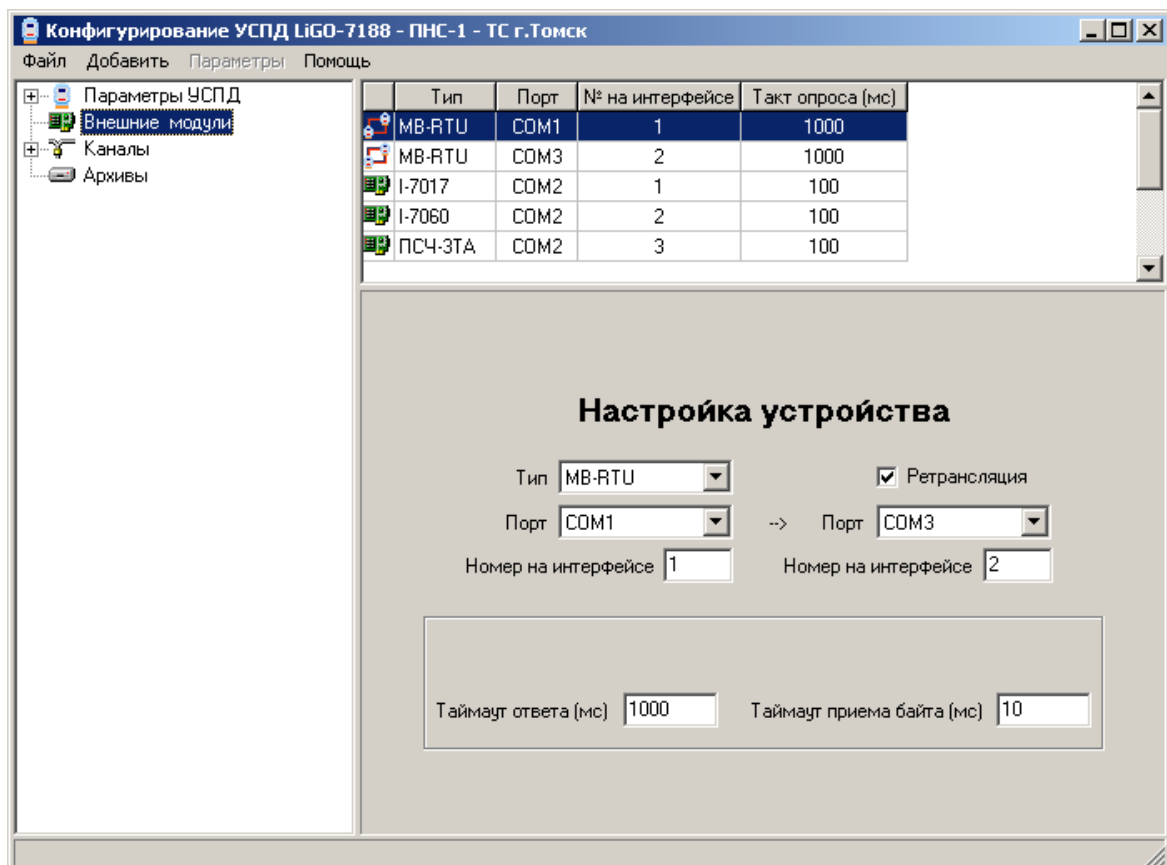
!

3.8





MB-RTU:



-
-
-
-
-

4.4

LiGO-7188,
 (-961, 4- ,).

4.5

(LiGO-7188,
 -)

-
-
-

— , 20 ;
 — ;
 — ;

4.6

(LiGO-7188,
 -)

-
-
-
-

— — , 20 ;
 — ;
 — ;

4.7

LiGO-7188,

2- 12-
9 24

- - 45 ;
- - 6 ;
- - 4 .

5.4 -960

;

;

;

()

()

) (

)

- 156 1 -
- 156 2 -
- 157 1 -
- 157 2 -
- 158 1 -
- 158 2 -

1

2

1

2

1

2

1200 bps.

5.5 -961

961

961

961

;

;

75

;

- 151 * - 1-4
- 154 * - 1-4
- 156 * - 1-4
- 157 * - 1-4
- 158 * - 1-4
- 160 * - 1-4
- 161 * - 1-4
- 350 * - 1-2
- 351 * - 1-2
- 360 * - 1-2
- 361 * - 1-2
- 060 -
- 061 -

_____ () . 4800 bps. 9600 bps

5.6 DEP-SLDA

19200 bps. dep- : 8 ()

5.7 -1

- DPRC -
- DCUR -
- DTME -

2400 57600 bps

5.8 DK-8070

DK-8070 () DK-8070 RS-485 RS-232, I-

7000.

" , "ENTER", "ESC".

"DEL"

2400 115200 bps

5.9 -5

)

(

1..8

(') .

- T (°) –
- P () –
- M () –

300 9600 bps



5.10 -010

-010

-010

19200

LiGO-7188

() .

5.11

-011

-011

-011

19200

()

LiGO-7188

5.12

-020

-020

-020

19200

()

LiGO-7188

5.13

-030

-030

()

-
-
-
-
-
-
-
-
-
-

); (60 — 1080 — 48 (45
). 1 ;

RS-232 (

: 4800 bps, 8 , (None), 2 -

5.14 -3

50

5.15 -3 .04

50

5.16 2726

(4). 1.0. 220 50
5(50)

- ;
- ;
- (),
- 0,4 ;
- ; 4-
- - ;
- ;
- ;
- .

5.17 -4

:
8- 11 12- ()
) ; 2 30 .
:
; , cos ? ;
1, 2 3, /
1, 2 3

: 9600 bps, 8 , 1 (Odd),

1

5.18

200

-
-
-
-
-
-

200

:

(,)

/

225

5.19

230

-
-
-
-
-
-
-
-
-

230

:

0,5S 1,0S

-

(,)

(1-45 .)

/

225

6

Modbus

6.1

Modbus RTU.

ITU-T V.41,

$x^{16}+x^{12}+x^5+1$).

(- Prosoft- 3,5

Systems)

7

1.

MB-RTU	MB-RTU
MB-RTU, ()	COM1 AT-Modem,
RS232/RS485 COM1	

2.

:

5

COM1, RS232, 9600 bps, 1.

8



Web: <http://www.skipa.ru>
 E-mail: info@skipa.ru

-
- . : (382-2) 59-52-24
 - . : (382-3) 77-01-07
 - . : (382-3) 77-00-77

